

HARMONY



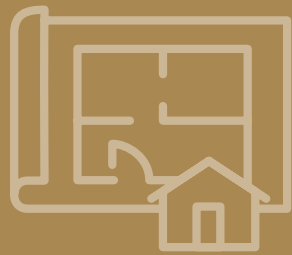


Designed for buyers seeking the sophistication of a site-built home, Harmony is a well-appointed packaged home at a lower price than similar, site-built homes. Harmony includes loads of upgraded features and opportunities for personalization that discerning consumers simply love. All of this without interfering with production rates. Your buyers will love the high-end designs that deliver the feeling of customization without the wait.

The Perfect Balance

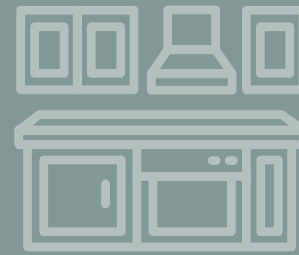
To get the right sound out of high quality speakers, the EQ must be set and balanced. To find a home that's attainable and not overcomplicated while offering flexibility in style and personalization also requires a intentional balance. Harmony is bringing the perfect mix.

Building off the exceptional standards such as 9' flat ceilings, Quartz island countertops, and full ceramic subway tile kitchen backsplash, Harmony has been improved in 3 ways:



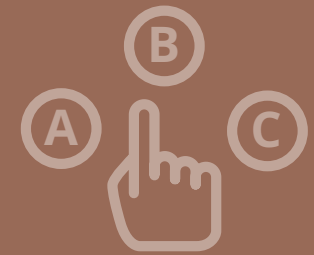
More Floor Plans

- Over 30 models now available
- Serving ADU markets to private property
- Single section to triple section homes



Refreshed Decor

- You pick your décor selections for more personalization
- New modern-gray cabinet color option
- Optional quartz countertops throughout in 2 colors



More Flexibility

- Special engineering for customer sites
- Integrated porches
- Updated option offering for personalization

Distinctions

Top Harmony Features



9ft Flat Ceilings and 80” Windows

While most standard manufactured homes have 8’ ceilings, the perceived value of 9’ ceilings is much greater than 12”. Smooth, painted ceilings reflect a clean, modern, and residential feel.



Frigidaire® Black Stainless Steel Appliances

Clayton uses Frigidare® appliances for the quality and longevity. Harmony uses Black Stainless Steel models to bring extra style and class to our homeowners.



Walk in Shower with Solid Surface Walls

Offering additional style and functionality, the solid surface tile visually highlights the shower while providing a easy-to-clean surface. The tile paired with a glass shower barn door provides an elevated look and feel to the home.



Tall 45” Overhead Cabinets and Quartz Tops

Every Harmony home comes standard with white Quartz island countertops and black pendant lights that offers a pop of contrast. The 45” overhead cabinets offer additional storage and high-end design in a variety of colors that perfectly blends function and style.

Harmony Standard Specifications

- 9' Flat Ceilings

Featuring 80" Windows Per Plan

- LED Recessed Can Lights Throughout

- Ceiling Fan Prep in Living Areas & Bedrooms

- Upgraded Shaw® Carpet

- Kwikset® Door Hardware Throughout

Featuring Thumbatch Front Door

- Frigidaire® Black Stainless Steel Appliance Package

- Hardwood Cabinets & Frames

Featuring 42" Overheads & Drawer over Door Construction

- Full Subway Tile Backsplash in Kitchen

- Farmhouse Stainless Steel Kitchen Sink

- Pfister® Faucets Throughout

Featuring Chrome Spring Load Pull Down Kitchen & Matte Black

Exclusive in Baths

- Quartz Island Countertop (Optional throughout)

- Decorative Farmhouse Pendant Lighting Over Island

- Upgrade Primary Bath with Solid Surface Shower Walls

Featuring Glass Shower Barn Door

- Upgrade Exteriors Included

Featuring Unique Elevations Per Plan

- Craftsman Style Front Door

- 9-Lite Rear Door

- Ring® Video Doorbell

- 2x6 Exterior Walls & R-19 Insulation

- Architectural 3 Tab Shingles – 2 colors

- 30 LB Roof Load (Option 40 lb)

- eBuilt™ Zero Energy Ready Homes™
(R-27 floor, R-21 wall, R38 roof)

*** Non eBuilt Homes May Have Lower Insulation Values***

- Carrier® Smart Comfort Furnace System

- ecobee® Smart Thermostat

Clayton Built® Features



ecobee smart thermostats are engineered for enhanced energy savings and controlling comfort.



SmartComfort® by Carrier is a fully insulated, sealed Gas Furnace or HVAC Heat Pump that ensures you feel the comfort but don't hear it.



More than just a beautiful design feature, Lux windows help homes be more energy efficient with low-E glass and optional argon gas-filled windows.



Kwikset® SmartKey Security™, with one-key convenience, allows you to re-key your lock yourself in seconds and provides security that protects against advanced break-ins.



Shaw® Floors' R2X industry-leading applied chemistry for carpet defense provides consumers the long-term benefit of cleaning spills, soil and pet accidents quickly and easily.



Frigidaire offers modern, family-friendly designs purposefully crafted with time-saving solutions like premium fingerprint-resistant Smudge-Proof® finishes.



Pfister® faucets are built using metal parts, providing great durability over the life of the faucet. Every drain includes Pfister's Pforever Warranty® that covers finish and function.



Rheem®'s 40-gallon, dual-element hot water heater comes standard, meaning more hot water for longer. Automatic thermostats keep water heated to your desired temperature.

Introducing Clayton eBuilt™ Homes

The highest-performing, most energy-efficient home Clayton has ever built.



Trim Your Utility Bills

eBuilt™ homes are incredibly energy efficient, even meeting and exceeding ENERGY STAR® standards. They also consume less energy, which can reduce annual utility expenses by 40-50%*.

Our advanced construction process has been carefully engineered to last a lifetime or two. That adds up to substantial savings over the years!



Home Features:

Solar - ready

SmartComfort® by Carrier HVAC heat pump

Rheem® hybrid heat pump water heater

Argon gas low-E windows

ecobee® smart thermostat

ENERGY STAR® Frigidaire® appliances

Pfister® bathroom fixtures

LED lighting

Insulated doors

Additional home insulation

Sealed duct system

Whole house ventilation system

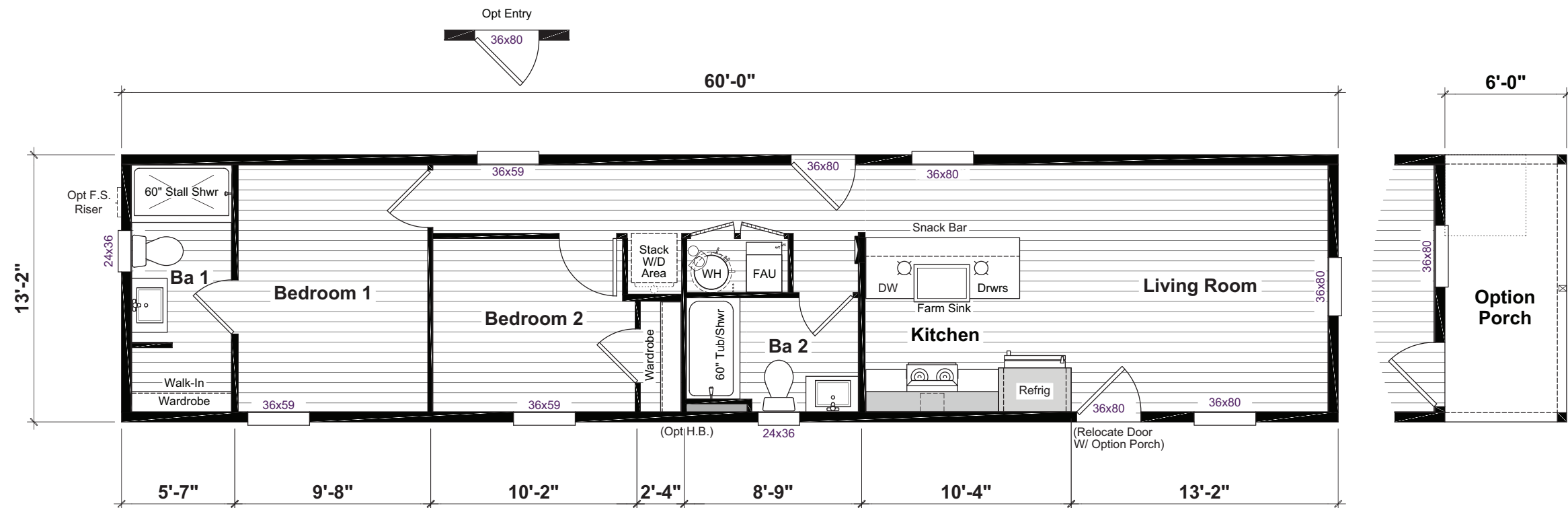
Harmony Lineup

HARMONY

CLASSIC SERIES

Deep Purple

HR14602A | 2 beds | 2 baths | 790 sq. ft.

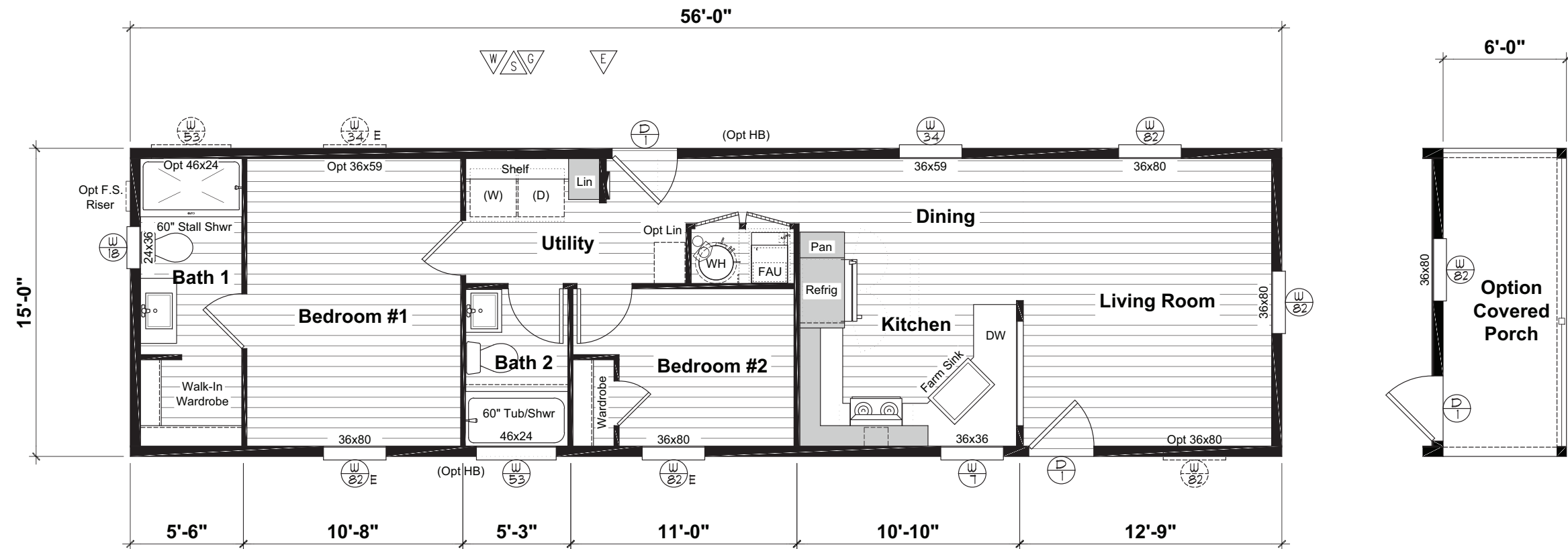


HARMONY

CLASSIC SERIES

Cure

HRM16562A | 2 beds | 2 baths | 840 sq. ft.

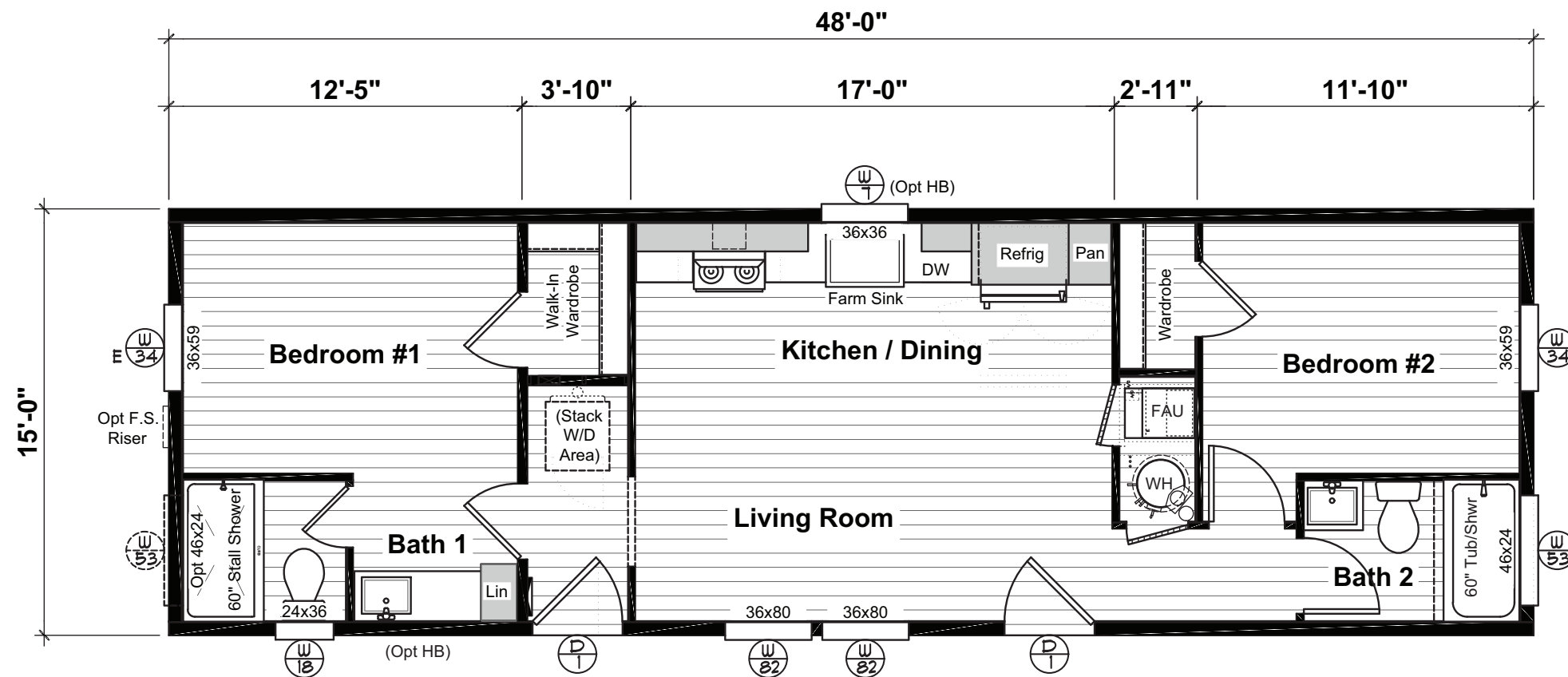


HARMONY

CLASSIC SERIES

Cars

HRM16482A | 2 beds | 2 baths | 720 sq. ft.

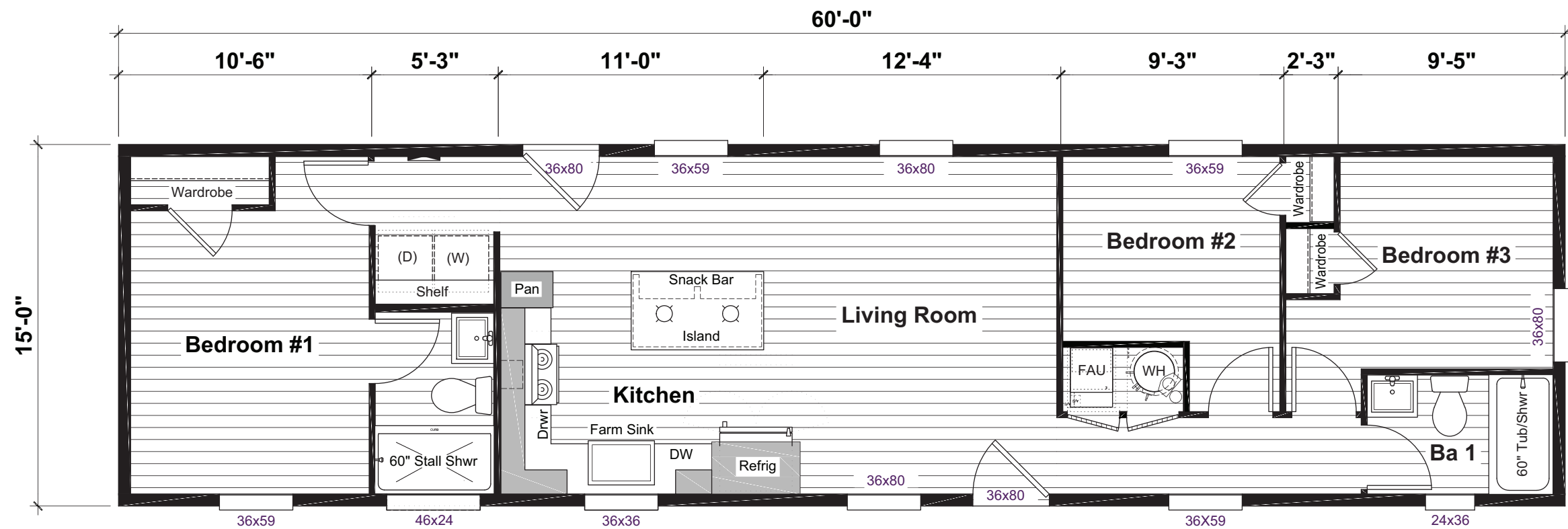


HARMONY

CLASSIC SERIES

Dylan

HR16603A | 3 beds | 1 baths | 900 sq. ft.

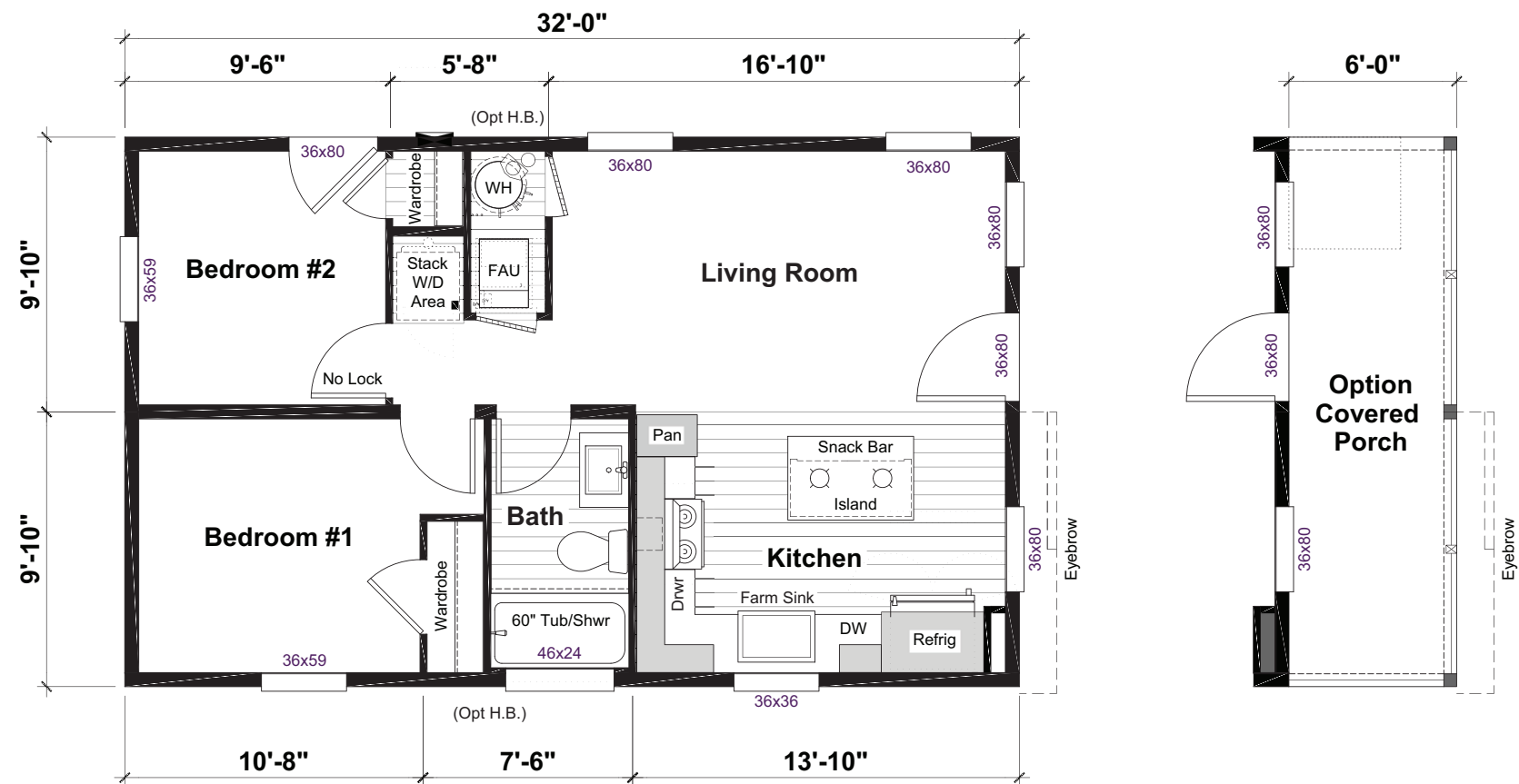


HARMONY

CLASSIC SERIES

Ramones

HR20322A | 2 beds | 1 bath | 630 sq. ft.

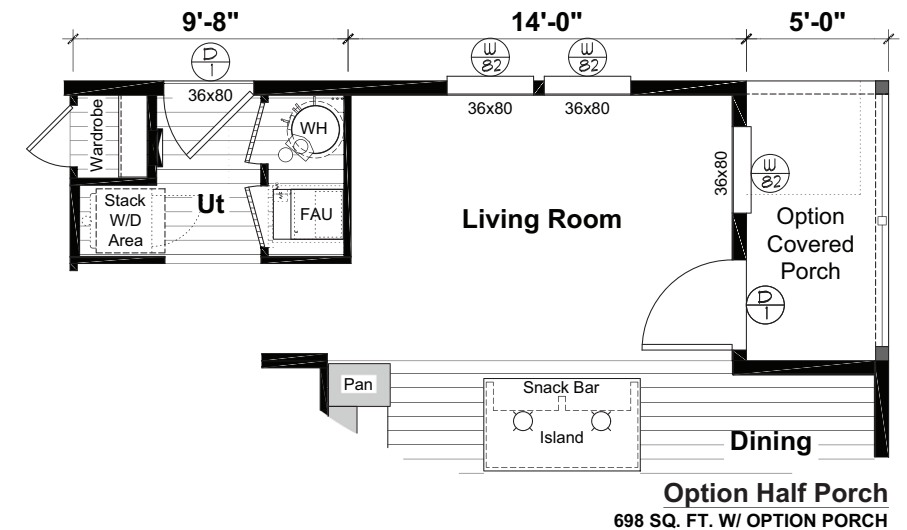
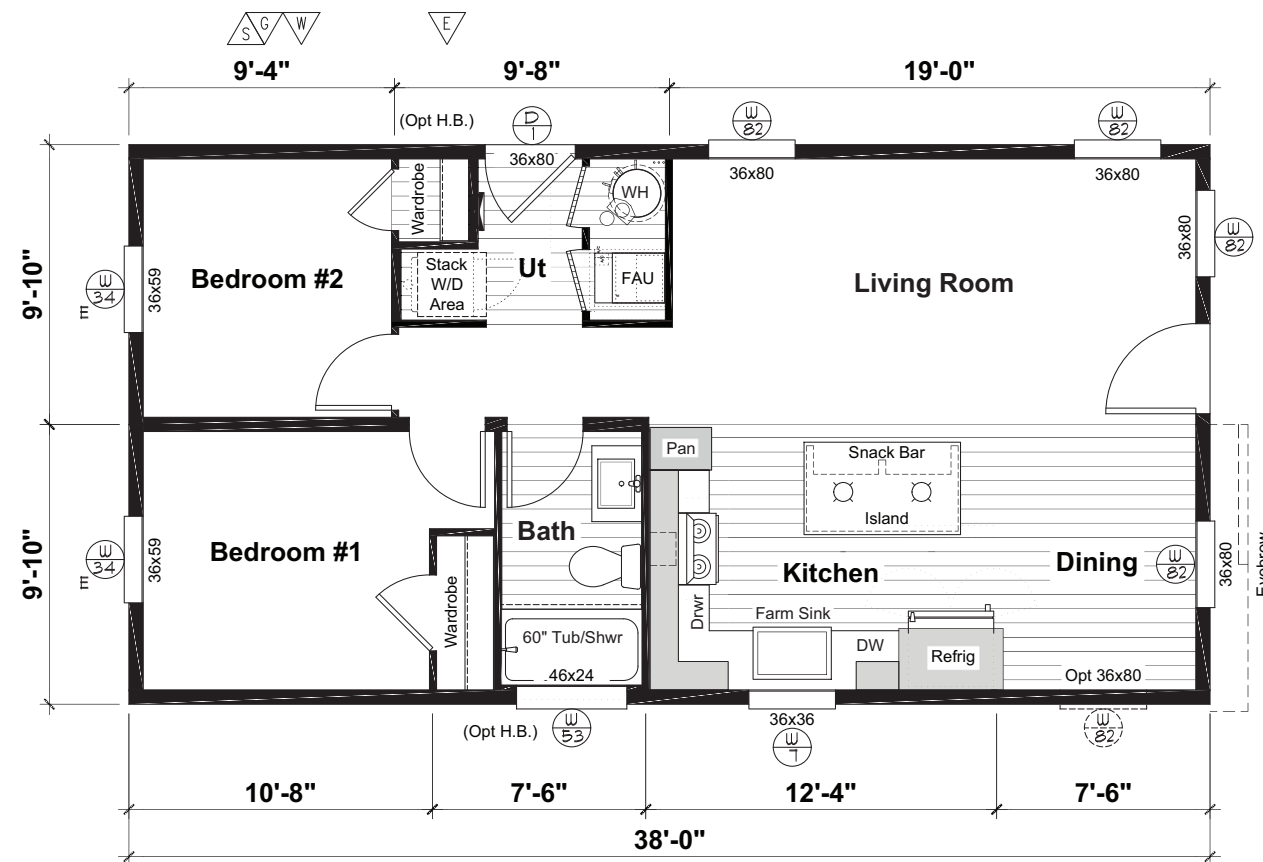


HARMONY

CLASSIC SERIES

Blondie

HR20382A | 2 beds | 1 bath | 748 sq. ft.

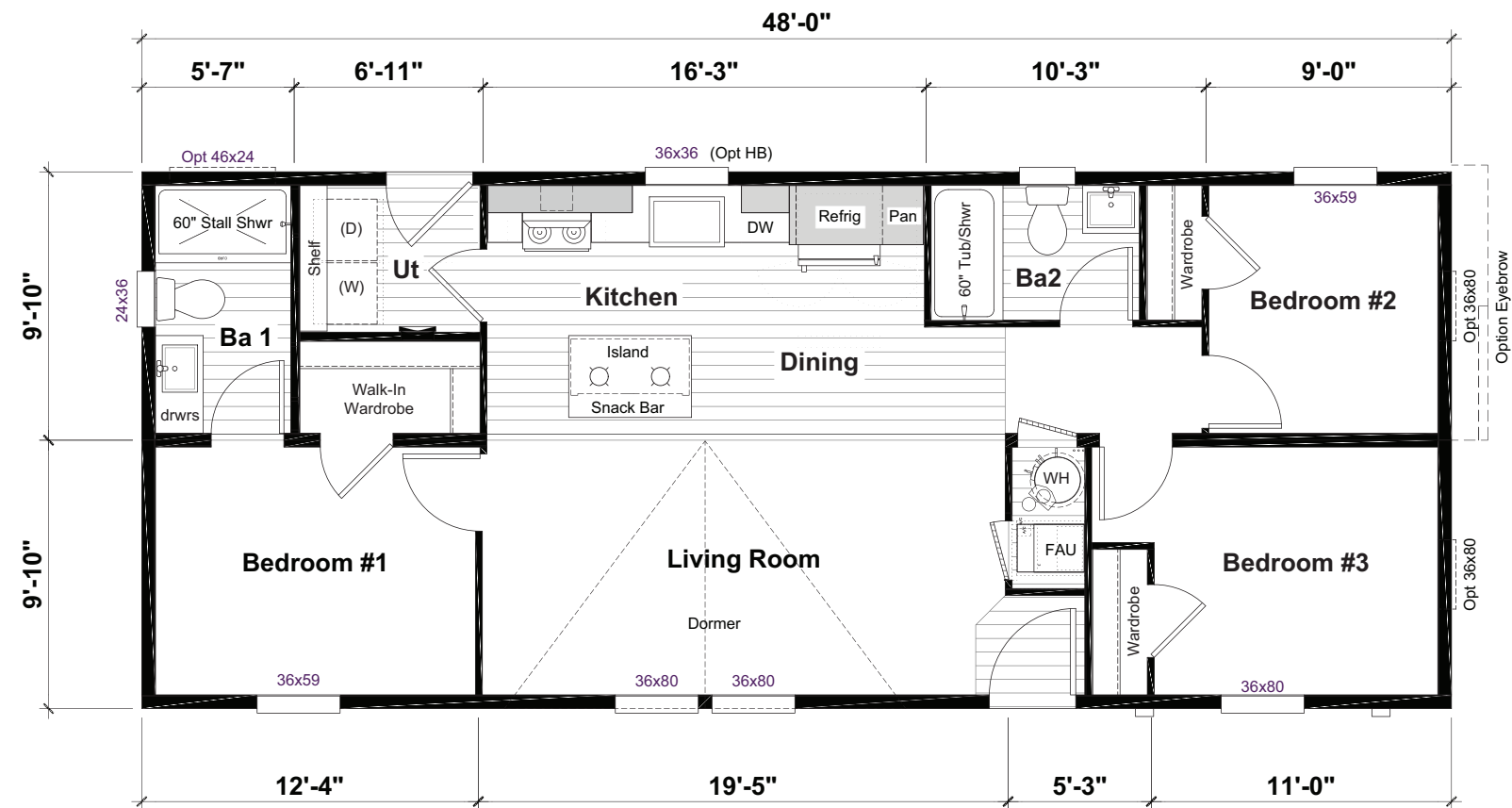


HARMONY

CLASSIC SERIES

Wings

HR20483A | 3 beds | 2 baths | 944 sq. ft.

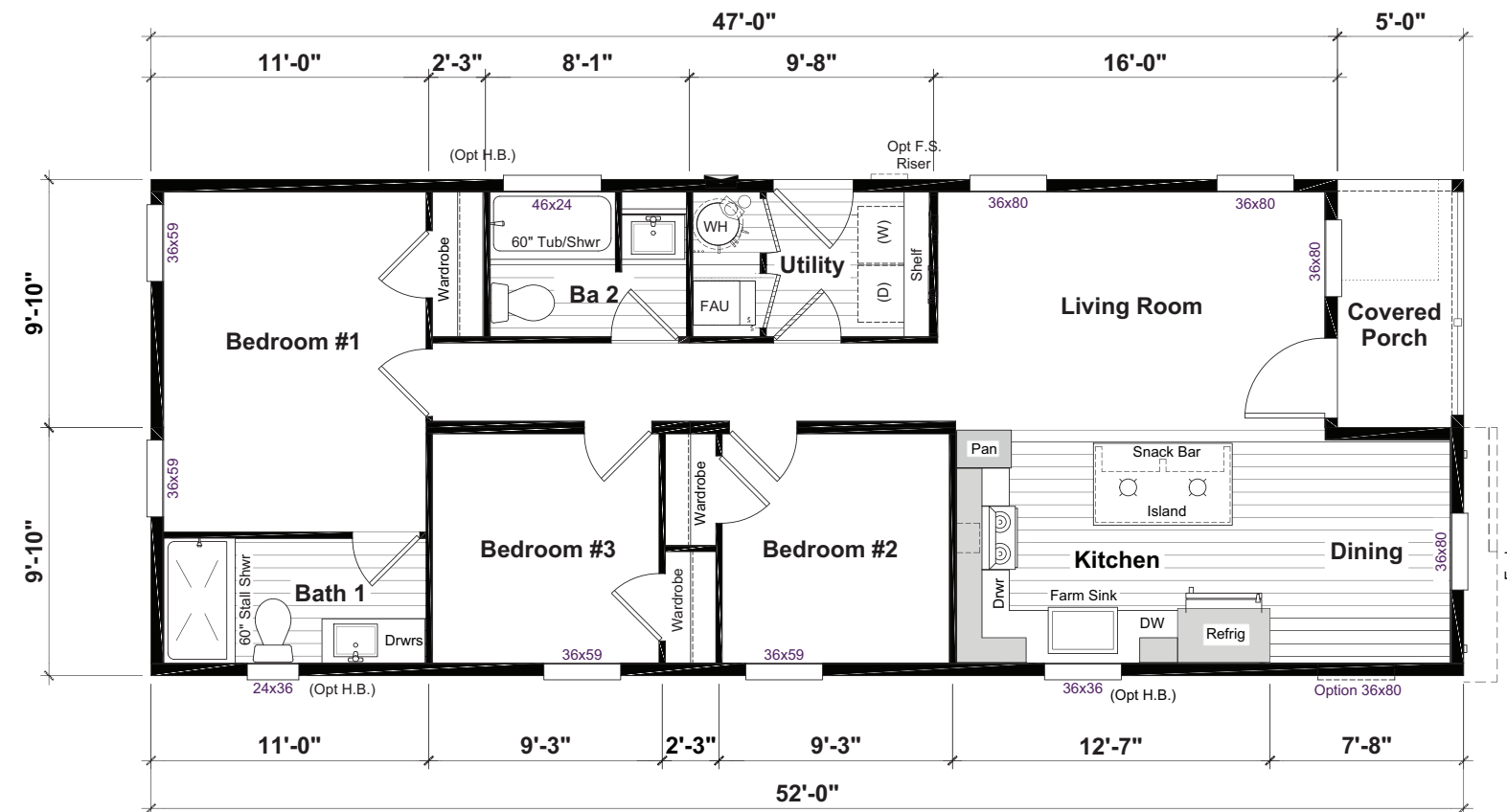


HARMONY

CLASSIC SERIES

Chicago

HP20523A | 3 beds | 2 baths | 974 sq. ft.

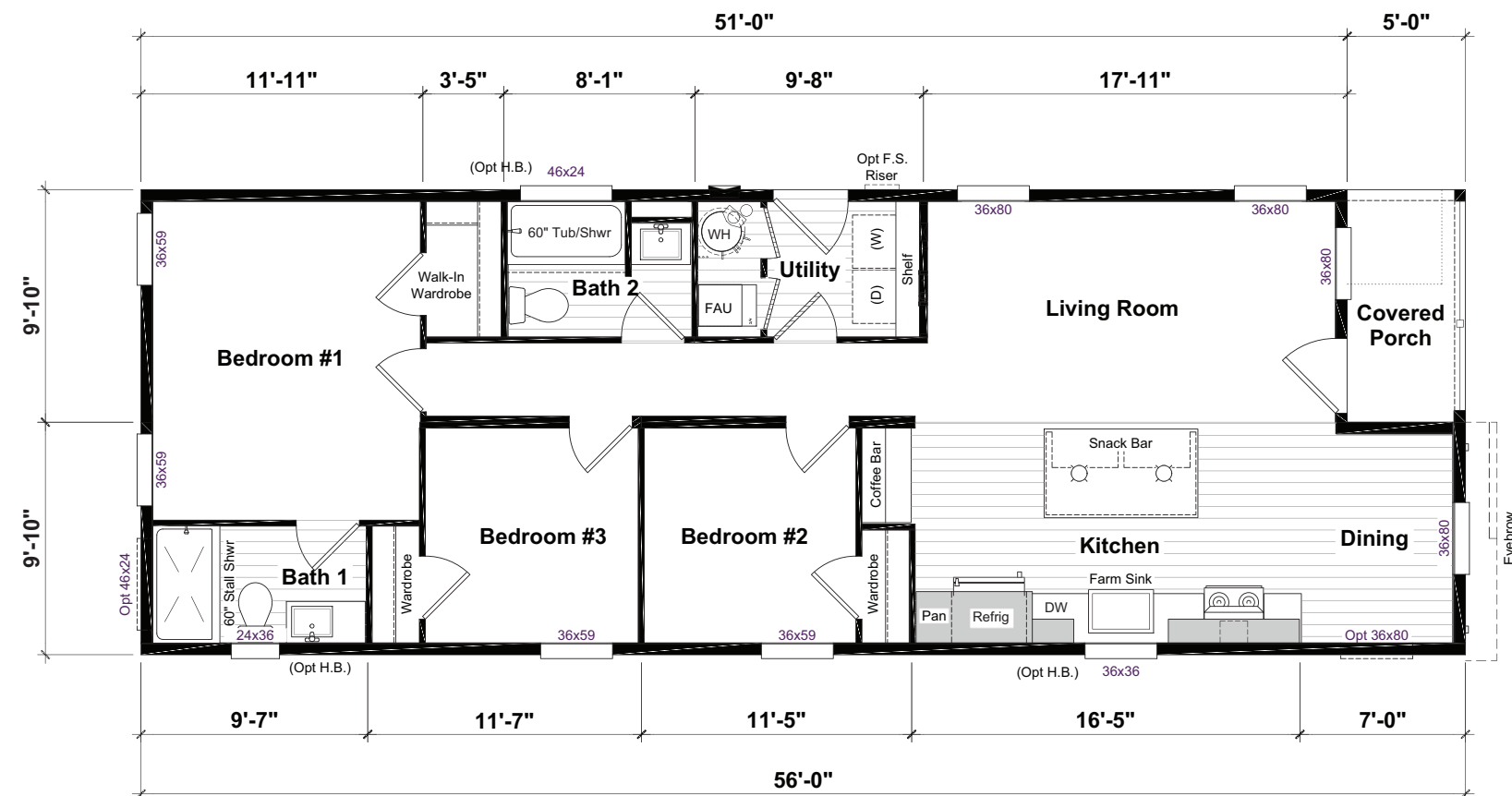


HARMONY

CLASSIC SERIES

Stones

HP20563A | 2 beds | 1 baths | 1,052 sq. ft.

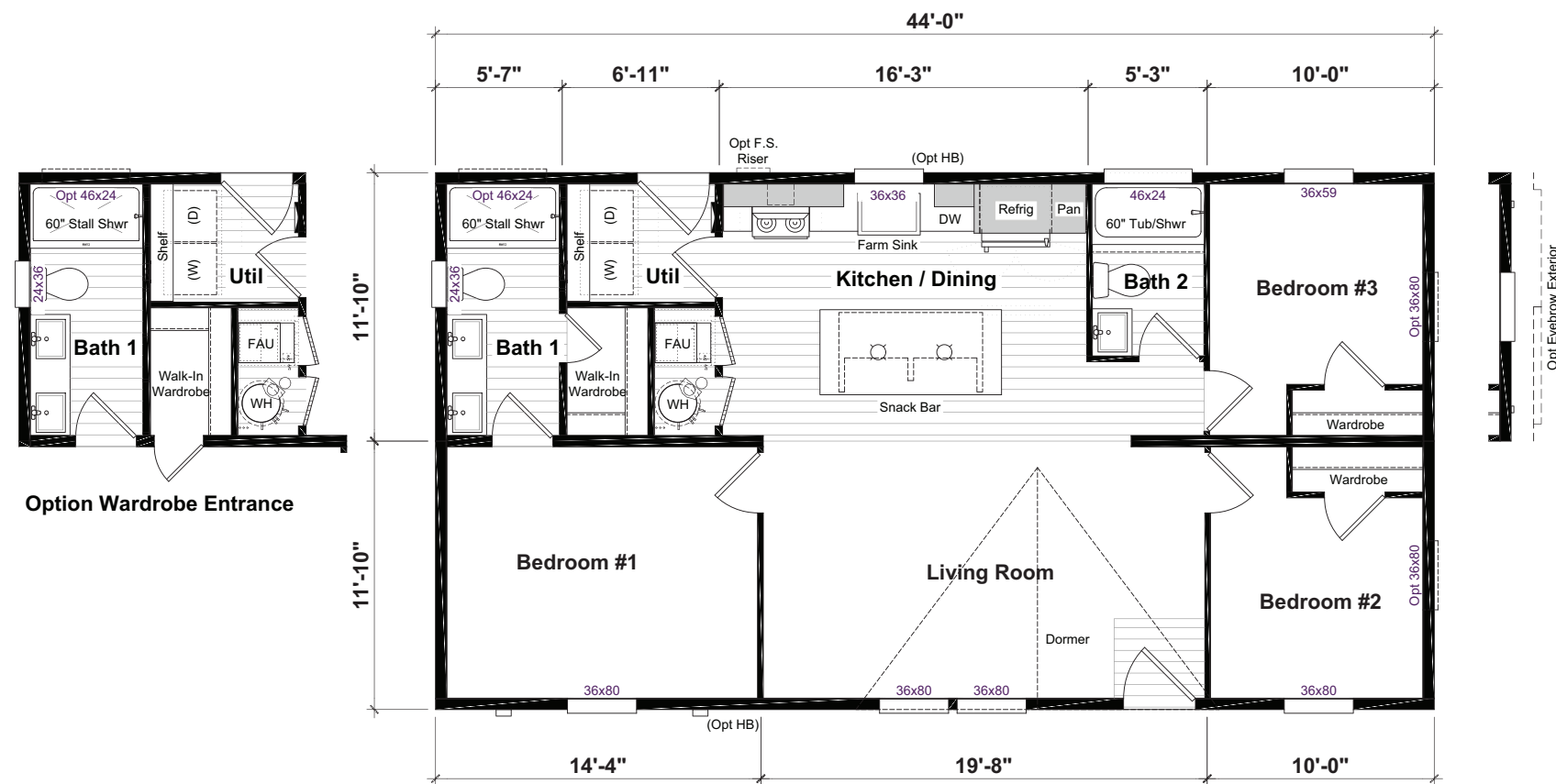


HARMONY

CLASSIC SERIES

Velvet

HR24442A | 3 beds | 2 baths | 1,041 sq. ft.

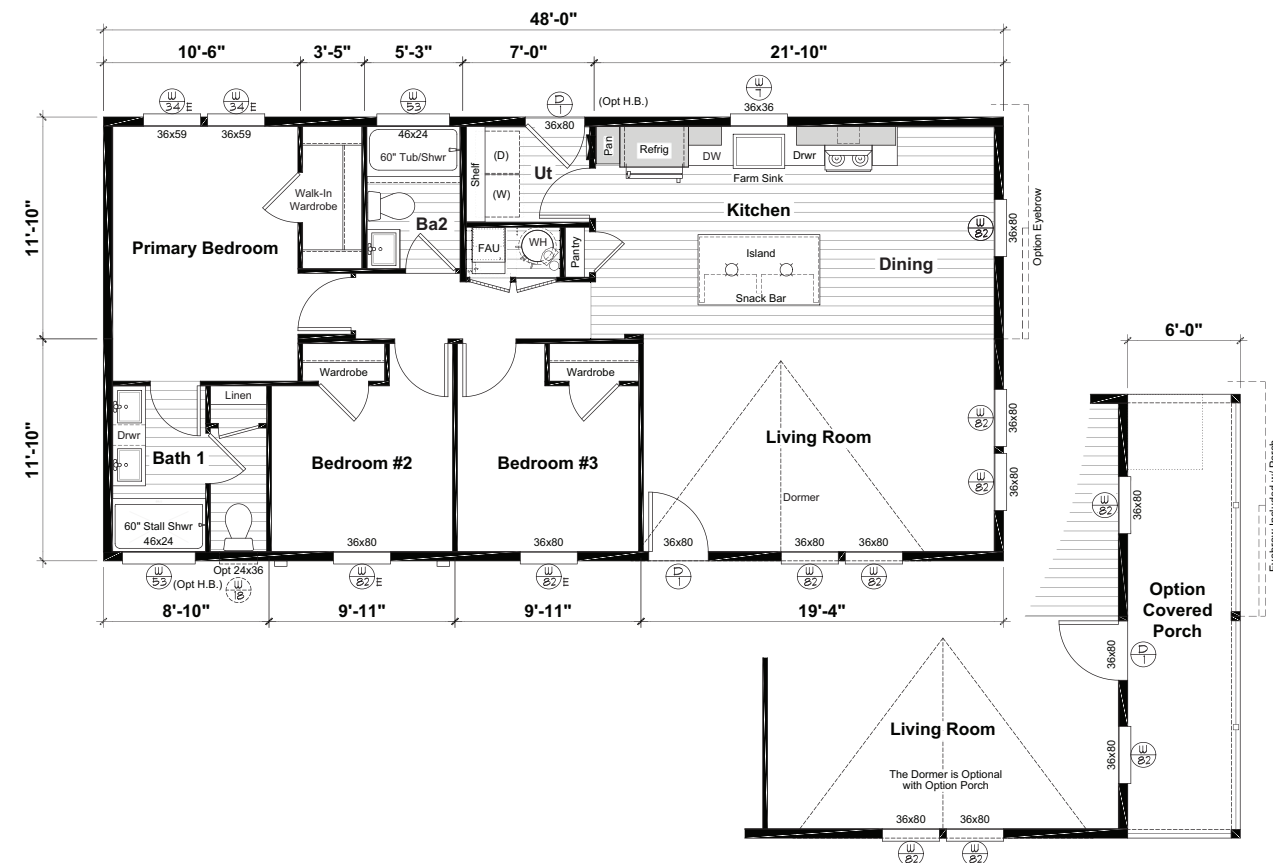


HARMONY

CLASSIC SERIES

Hot Chili

HR28443A | 4 beds | 2 baths | 1,136 sq. ft.

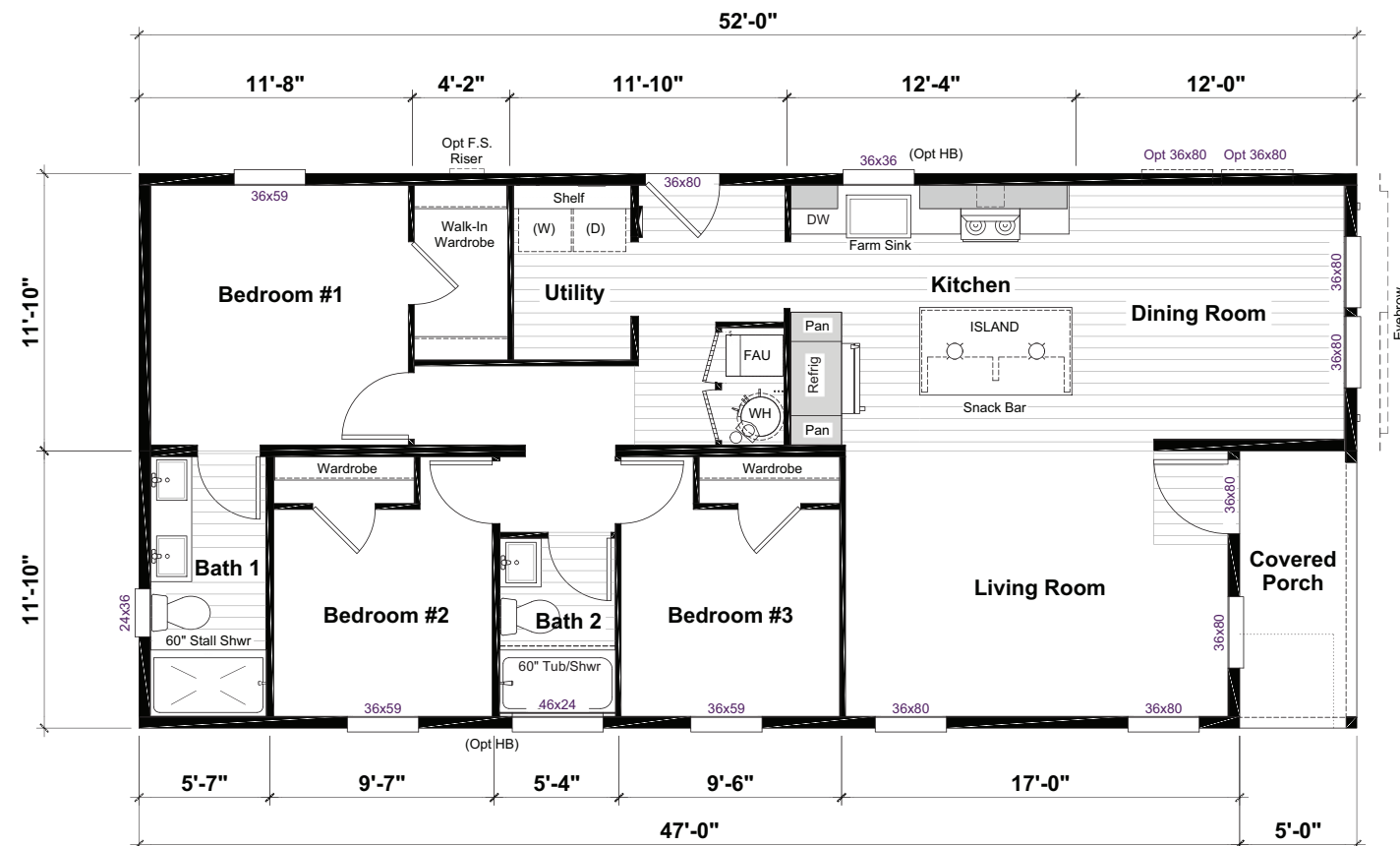


HARMONY

CLASSIC SERIES

Rush

HRM24423A | 3 beds | 2 baths | 1,171 sq. ft.

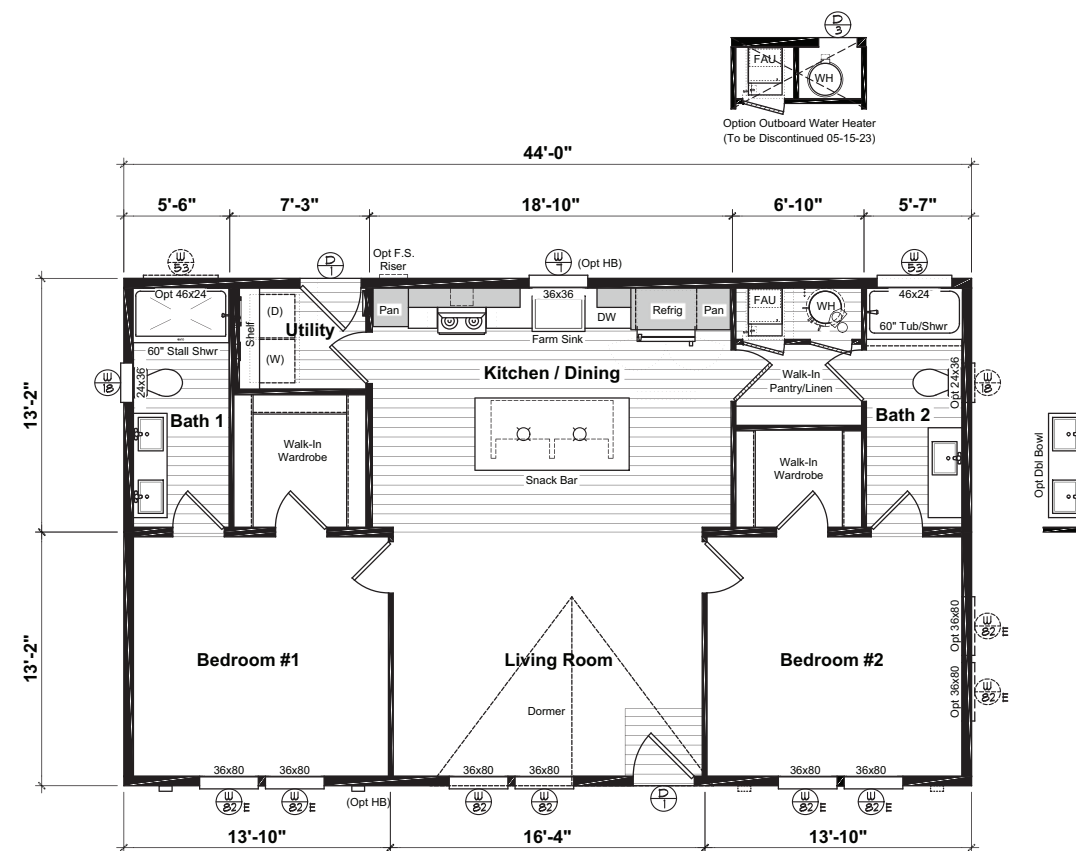


HARMONY

CLASSIC SERIES

Kansas

HRM28442A | 2 beds | 2 baths | 1,158 sq. ft.

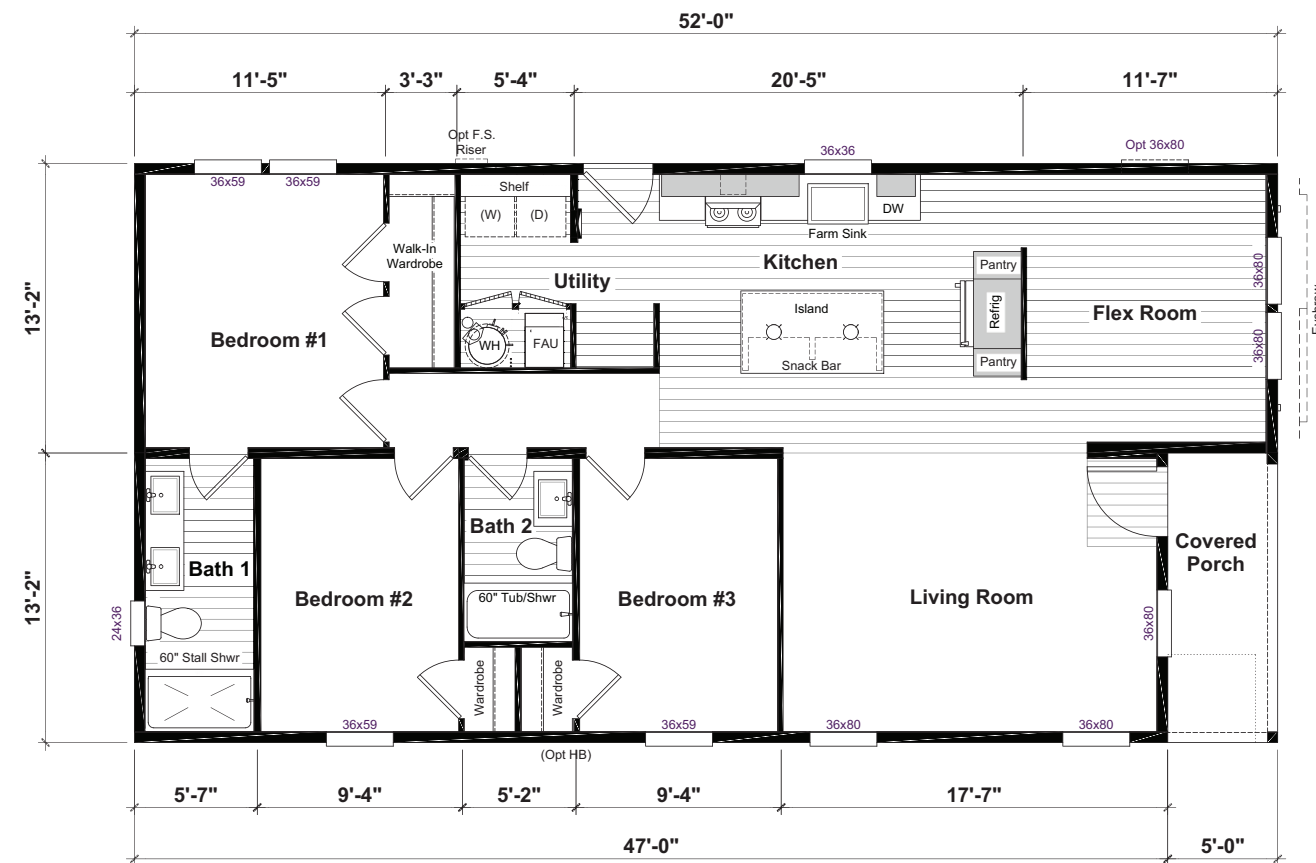


HARMONY

CLASSIC SERIES

Eagles

HP28523A | 3 beds | 2 baths | 1,303 sq. ft.



HARMONY

CLASSIC SERIES

Train

HR28524A | 4 beds | 2 baths | 1,369 sq. ft.

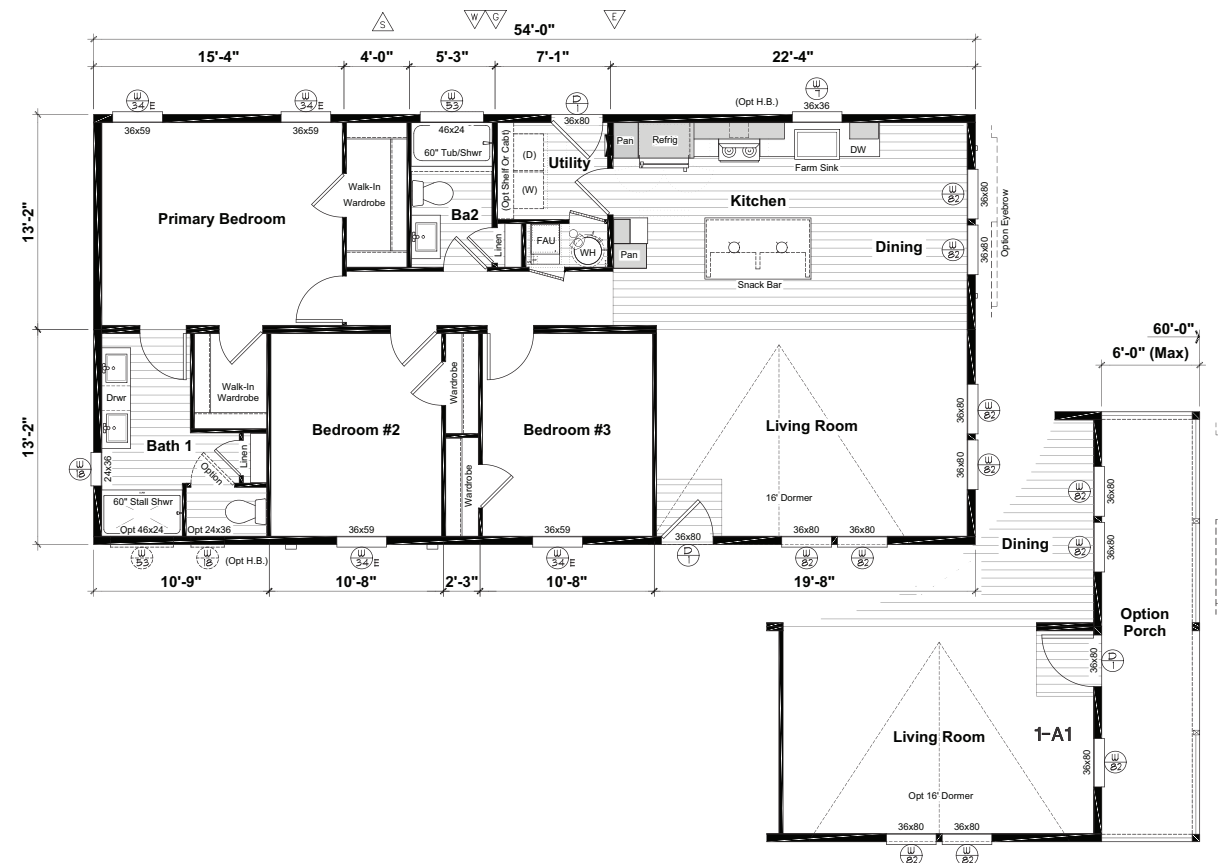


HARMONY

CLASSIC SERIES

E Street

HR28543A | 3 beds | 2 baths | 1,422 sq. ft.

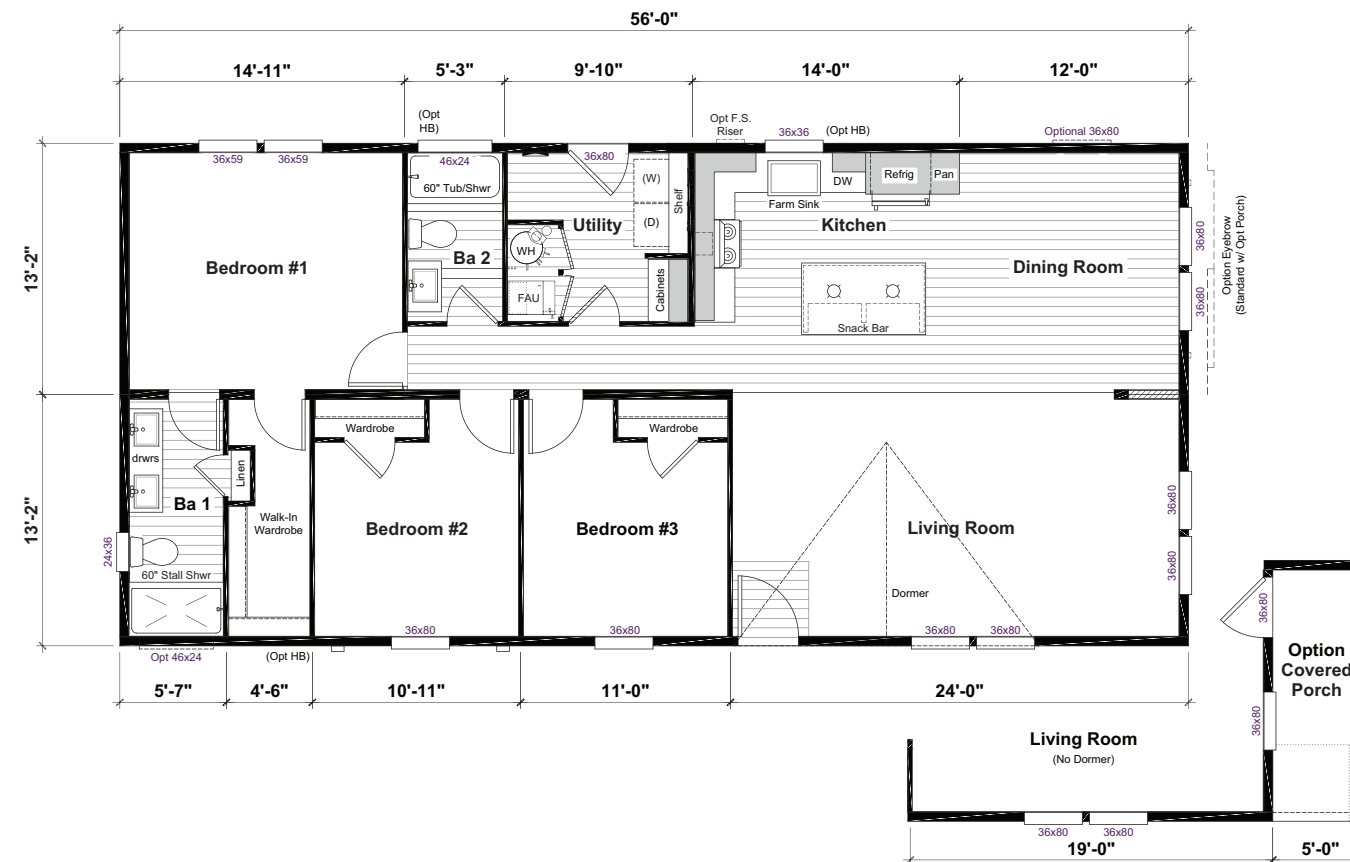


HARMONY

CLASSIC SERIES

Lightfoot

HP28563B | 3 beds | 2 baths | 1,475 sq. ft.



HARMONY

ClaytonWestHarmony.com



The home series, floor plans, photos, renderings, specifications, features, pricing, materials and availability shown will vary by retailer and state, and are subject to change without notice.